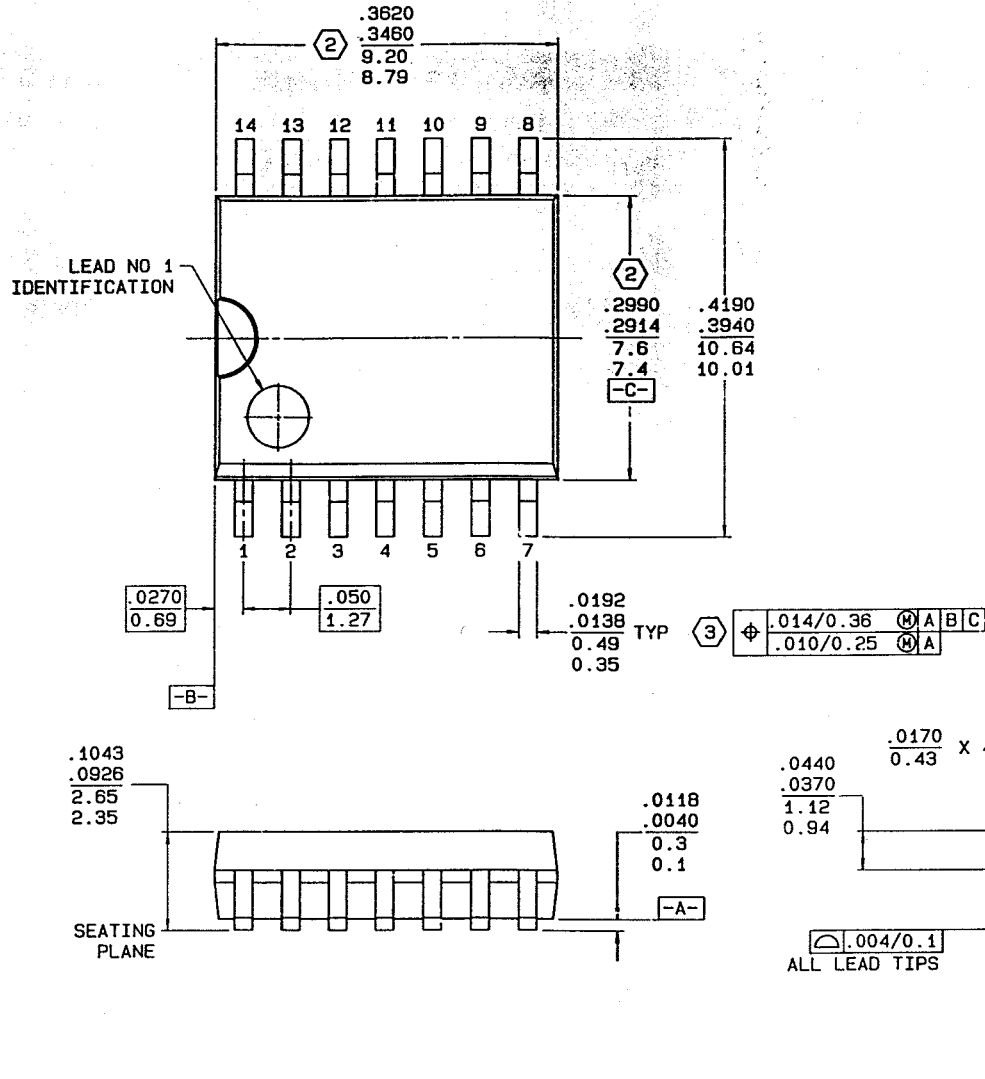


THIS DRAWING IS THE PROPERTY OF NATIONAL SEMICONDUCTOR CORPORATION. NO USE THEREOF SHALL BE MADE OTHER THAN AS A REFERENCE FOR PROPOSALS AS SUBMITTED TO NATIONAL SEMICONDUCTOR CORPORATION FOR JOBS TO BE EXECUTED IN CONFORMITY WITH SUCH PROPOSALS UNLESS THE CONSENT OF SAID NATIONAL SEMICONDUCTOR CORPORATION HAS PREVIOUSLY BEEN OBTAINED. NO PART OF THIS DRAWING SHALL BE COPIED OR DUPLICATED OR ITS CONTENTS DISCLOSED. THE INFORMATION CONTAINED ON THIS DRAWING IS CONFIDENTIAL AND PROPRIETARY.

REVISIONS			
LTR	DESCRIPTION	E.C.N.	DATE
D	REVISED AND REDRAWN	04102	02/17/87
			JIM/LL



NOTES: UNLESS OTHERWISE SPECIFIED

- STANDARD LEAD FINISH:
200 MICROINCHES/5.08 MICRONS MINIMUM LEAD/TIN (SOLDER) ON COPPER.

(2) THESE DIMENSIONS DO NOT INCLUDE MOLD FLASH.

(3) DIMENSIONS APPLICABLE TO WITHIN .014/0.35 OF SEATING PLANE.

APPROVALS	DATE	NATIONAL SEMICONDUCTOR CORPORATION			
DRAWN JIM WINNETT	02/17/87	2800 Semiconductor Drive, Santa Clara, CA 95052-8090			
DFTG. CHK.		MOLDED PACKAGE, S.O., .300 WIDE, 14 LEAD			
ENGR. CHK. <i>[Signature]</i>	0-2-87				
APPROVAL					
		SCALE	SIZE	DRAWING NUMBER	REV
		N/A	C	MKT-M14B	D
		DO NOT SCALE DRAWING		SHEET 1 OF 1	